

# SPAREPARTS LIST

## Semi-electric Stacker SPM10



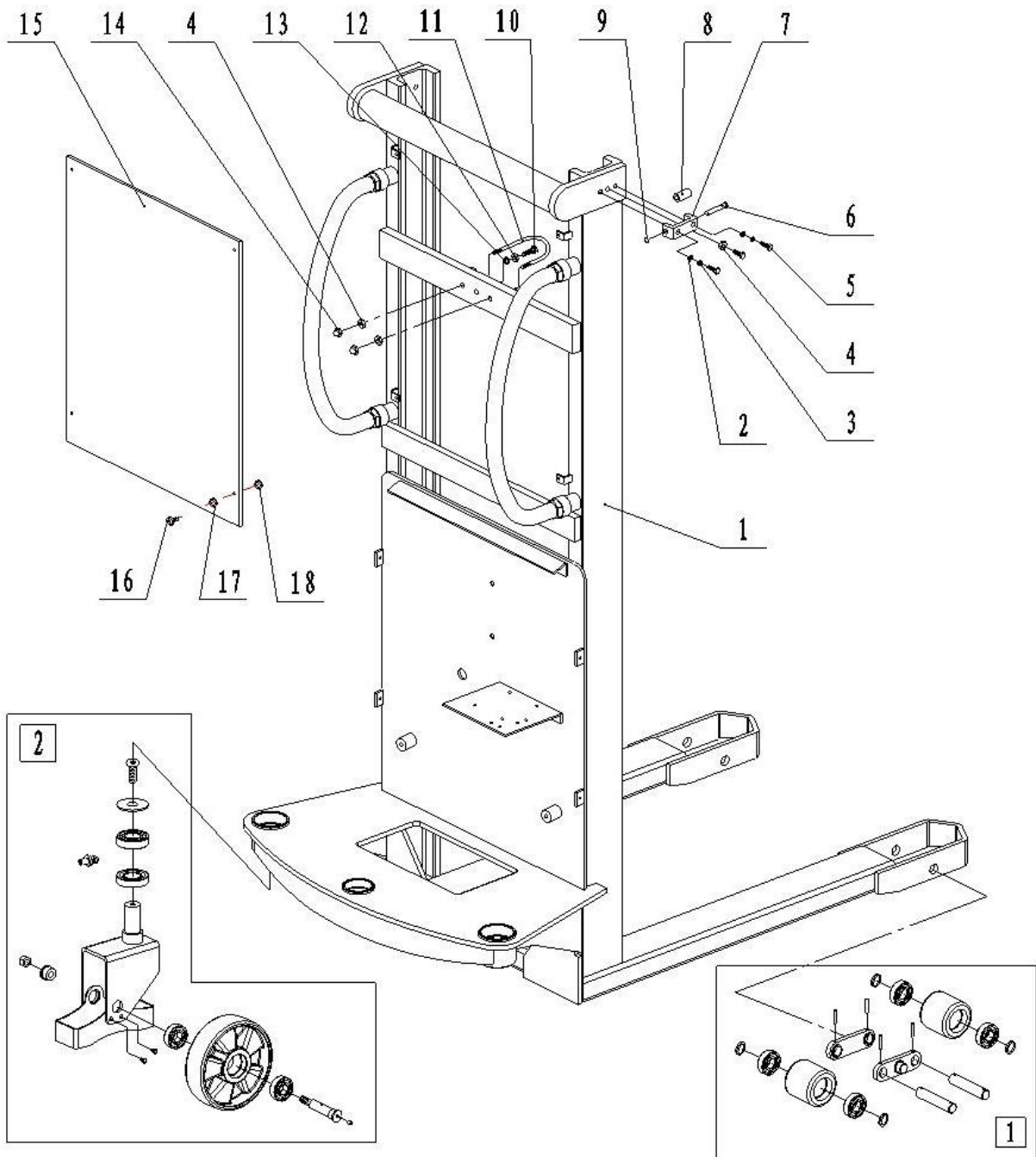
Version 20/2020

SPM10-BPT-004-EN

## TABLE OF CONTENTS

<b>Fig.1</b>	<b>Portable Double Mast .....</b>	<b>2</b>
<b>Fig.2</b>	<b>Stationary Double Mast .....</b>	<b>4</b>
<b>Fig.3</b>	<b>Portable Single Mast.....</b>	<b>6</b>
<b>Fig.4</b>	<b>Stationary Single Mast.....</b>	<b>8</b>
<b>Fig.5</b>	<b>Big Wheel Assembly .....</b>	<b>10</b>
<b>Fig.6</b>	<b>Front Wheel Assembly(Double wheel) .....</b>	<b>12</b>
<b>Fig.7</b>	<b>Front Wheel Assembly(Single Wheel) .....</b>	<b>13</b>
<b>Fig.8</b>	<b>Inner Mast.....</b>	<b>14</b>
<b>Fig.9</b>	<b>Steering Operating System .....</b>	<b>16</b>
<b>Fig.10</b>	<b>Stationary Pallet Frame .....</b>	<b>19</b>
<b>Fig.11</b>	<b>Portable Pallet Frame.....</b>	<b>21</b>
<b>Fig.12</b>	<b>Hydraulic System.....</b>	<b>22</b>
<b>Fig.13</b>	<b>Distribution Box Components .....</b>	<b>24</b>
<b>Fig.14</b>	<b>Pump Station Components .....</b>	<b>27</b>

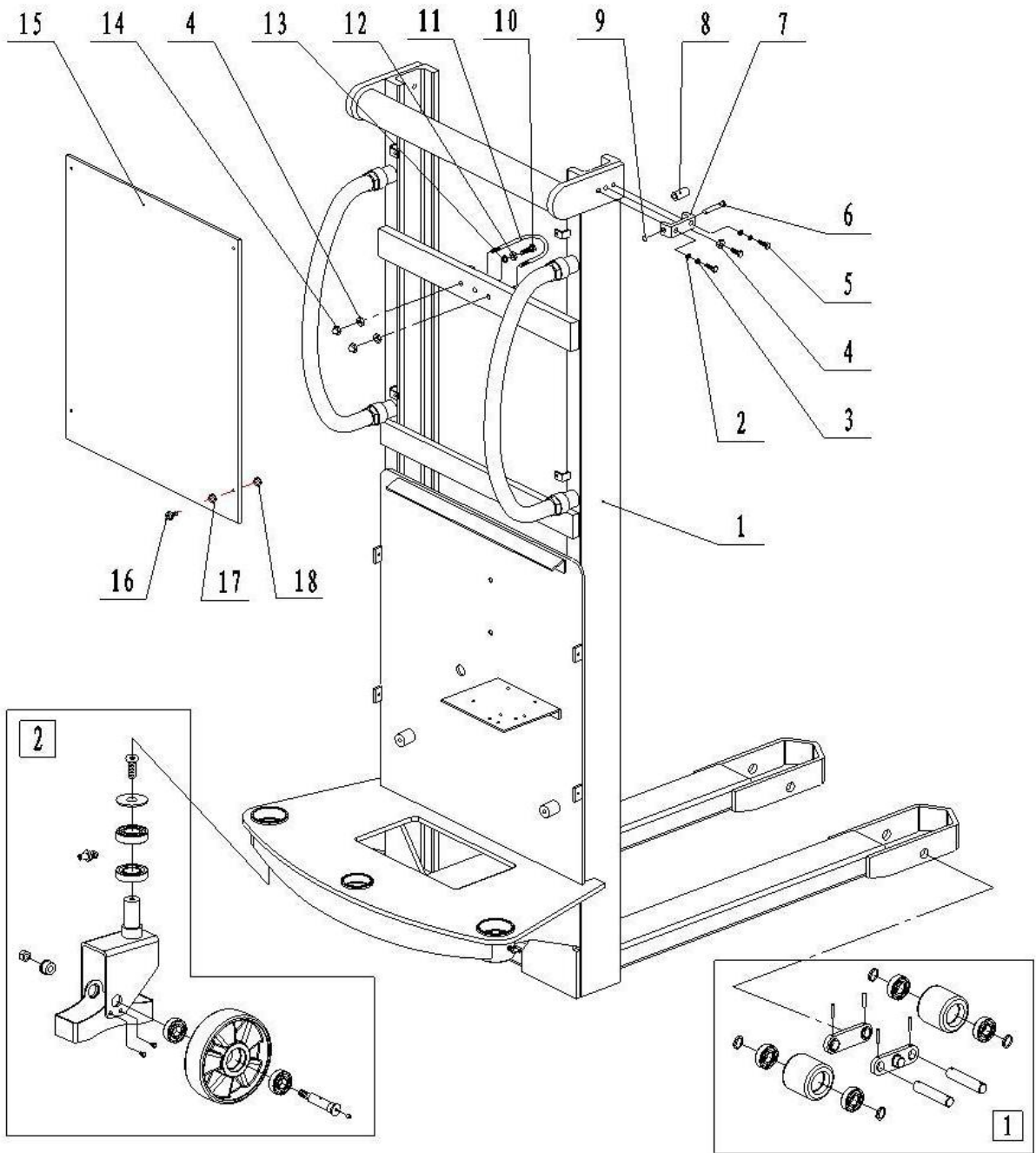
Fig.1 Portable Double Mast



**Fig.1 Parts List of Portable Double Mast**

No.	Old Art No.	New Art No.	Item	Quantity	Remarks
1	2530501005	400244010013	Mast	1	2500
	2530501015	400244010016			3000
	2530501016	400244010020			3350
2	0000025005	910400100006	Flat washer 8	4	
3	0000025004	910400500006	Spring washer 8	4	
4	0000024086	910300100006	Hex nut M8	4	
5	0000023487	910200200060	Screw M8x35	6	
6	2500507003	401744020001	Hinge pin	2	
7	2530504007	532021520075	Wheel seat	2	
8	2500511002	401744020000	Guide wheel	2	
9	0000026034	910401300003	Circlip for shaft 12	2	
10	0000023495	910100300039	Bolt M10x40	1	
11	2530202001	532024010007	Cylinder hoop	1	
12	0000024091	910300100007	Hex nut M10	1	
13	0000025065	910400500007	Spring washer10	1	
14	0000024092	910301000005	Cap nut M8	2	
15	2530503006	400244010015	Protection plate	1	2500
	2530503007	400244010019			3000
	2530503008	400244010023			3350
16	0000023488	910200500052	Screw M6x16	4	
17	0000025007	910400100005	Flat washer 6	4	
18	2210618001	400243020021	Rubber cushion	4	
①	2500500009	401717001000	Front wheel assembly	2	Double wheel
		402617001000			Single wheel
②	2500500007	401716501002	Big wheel assembly	1	

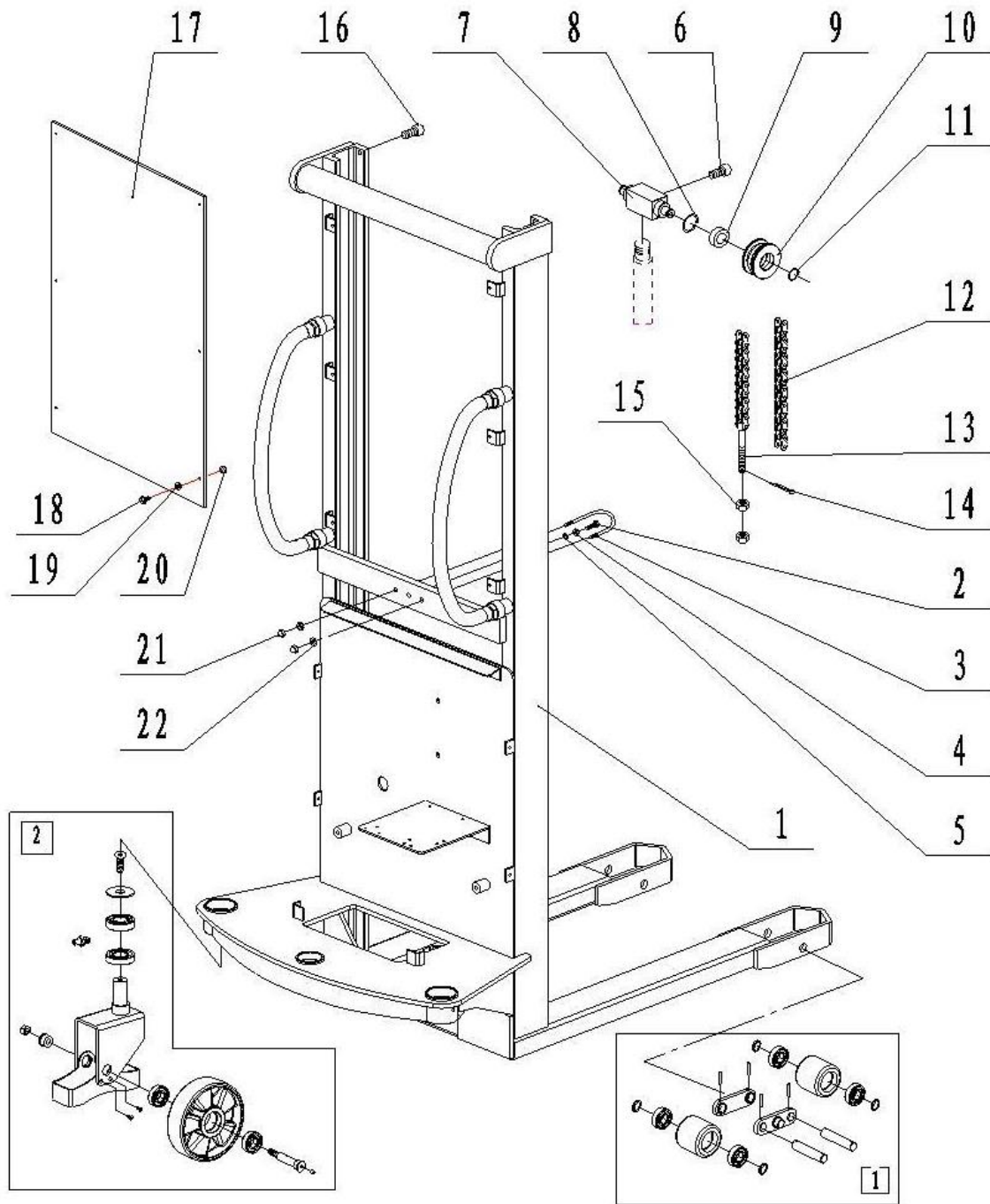
**Fig.2 Stationary Double Mast**



**Fig.2 Parts List of Stationary Double Mast**

No.	Old Art No.	New Art No.	Item	Quantity	Remarks
1	2530501003	400244010000	Mast	1	2500
	2530501009	400244010005			3000
	2530501010	400244010008			3350
2	0000025005	910400100006	Flat washer 8	4	
3	0000025004	910400500006	Spring washer 8	4	
4	0000024086	910300100006	Hex nut M8	4	
5	0000023487	910200200060	Screw M8x35	6	
6	2500507003	401744020001	Hinge pin	2	
7	2530504007	532021520075	Wheel seat	2	
8	2500511002	401744020000	Guide wheel	2	
9	0000026034	910401300003	Circlip for shaft 12	2	
10	0000023495	910100300039	Bolt M10x40	1	
11	2530202001	532024010007	Cylinder hoop	1	
12	0000024091	910300100007	Hex nut M10	1	
13	0000025065	910400500007	Spring washer 10	1	
14	0000024092	910301000005	Cap nut M8	2	
15	2530503003	400244010004	Protection plate	1	2500
	2530503004	400244010007			3000
	2530503005	400244010011			3350
16	0000023488	910200500052	Screw M6x16	4	
17	0000025007	910400100005	Flat washer 6	4	
18	2210618001	400243020021	Rubber cushion	4	
①	2500500009	401717001000	Front wheel assembly	2	Double wheel
		402617001000			Single wheel
②	2500500007	401716501002	Big wheel assembly	1	

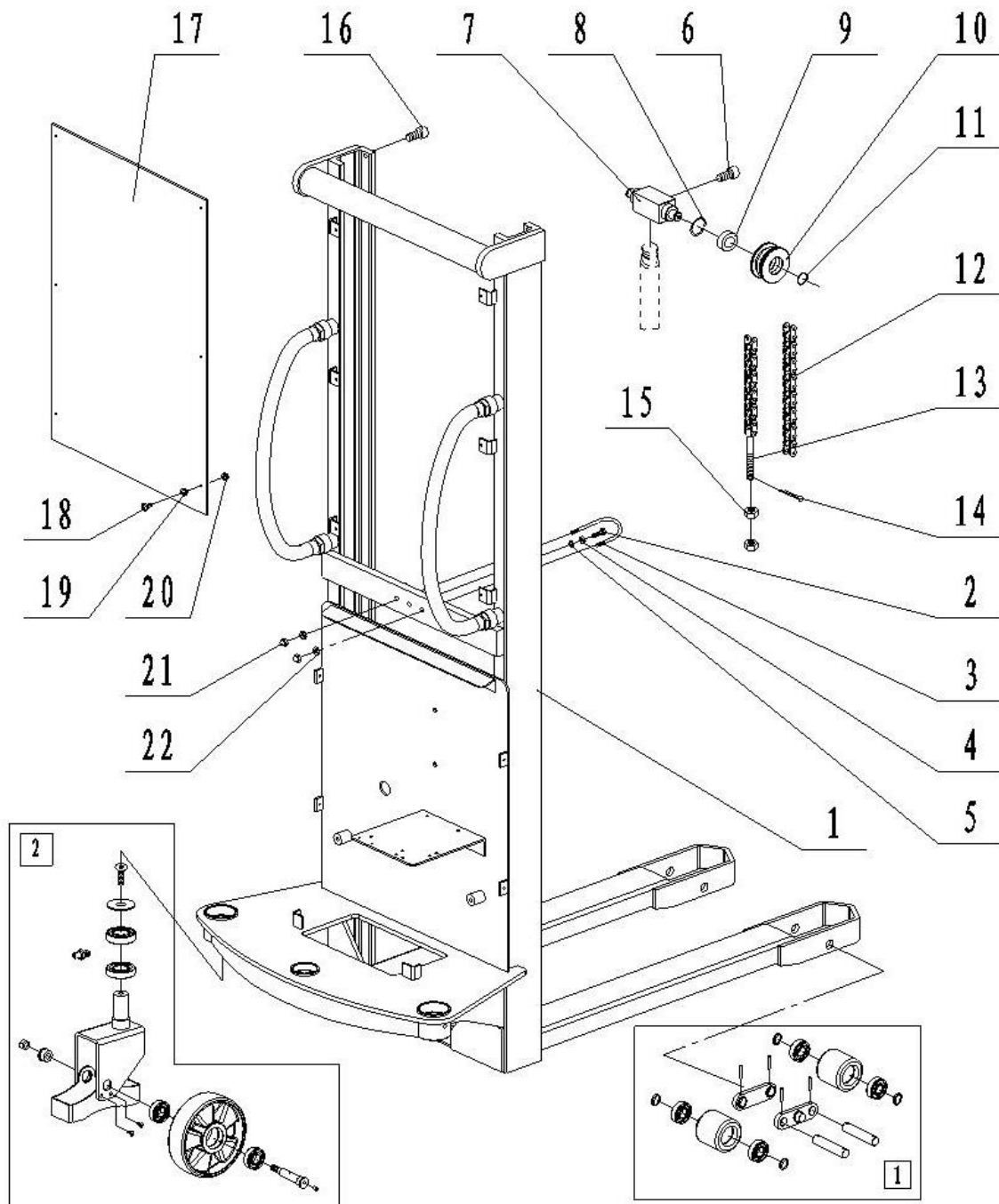
Fig.3 Portable Single Mast



**Fig.3 Parts List of Portable Single Mast**

No.	Old Art No.	New Art No.	Item	Quantity	Remarks
1	2530501008	400243010004	Single mast	1	1600
2	0000023495	910100300039	Bolt M10x40	1	
3	2530202001	532024010007	Cylinder hoop	1	
4	0000024091	910300100007	Hex nut M10	1	
5	0000025106	910400100007	Flat washer 10	1	
6	0000023013	910200200055	Screw M8x16	1	
7	2500502005	532024020001	Footstock	1	
8	0000026009	910401400013	Circlip for hole 47	2	
9	0000027107	910700200019	Bearing 62042Z	2	
10	2500502002	940200400009	Chain wheel	2	
11	0000026003	910401300011	Circlip for shaft 20	2	
12	0000029273	401743010007	Chain 12A-1 (69 joint)	2	
13	2500502007	532024020002	Chain rod	2	
14	0000028076	910600600019	Cotter pin 2x25	2	
15	0000024087	910300100009	Hex nut M14	4	
16	0000023513	910200200074	Screw M10x16	2	
17	2530503002	400243010005	Protection plate	1	
18	0000023488	910200500052	Screw M6x16	6	
19	0000025007	910400100005	Flat washer 6	6	
20	2210618001	400243020021	Rubber cushion	6	
21	0000024092	910301000005	Cap nut M8	2	
22	0000024086	910300100006	Hex nut M8	2	
①	2500500009	401717001000	Front wheel assembly	2	Double wheel
		402617001000			Single wheel
②	2500500007	401716501002	Big wheel assembly	1	

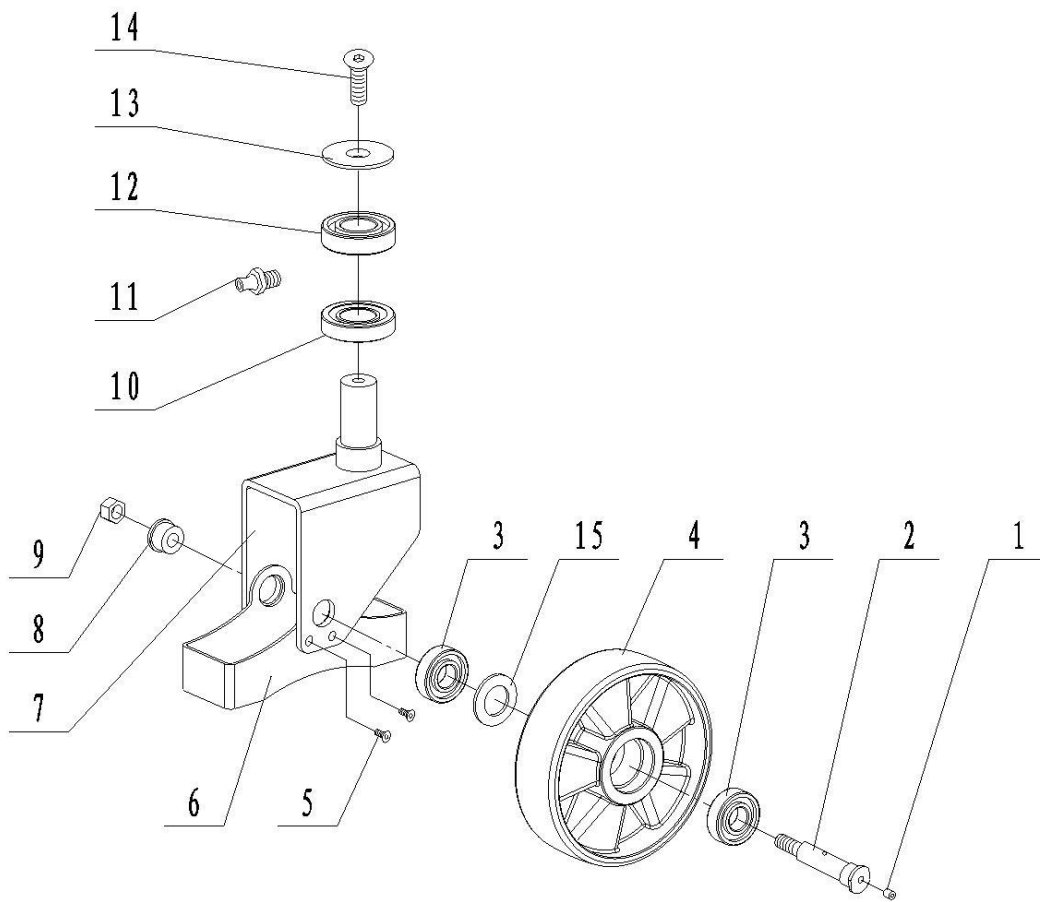
Fig.4 Stationary Single Mast



**Fig.4 Parts List of Stationary Single Mast**

No.	Old Art No.	New Art No.	Item	Quantity	Remarks
1	2530501007	400243010000	Single mast	1	1600
2	0000023495	910100300039	Bolt M10x40	1	
3	2530202001	532024010007	Cylinder hoop	1	
4	0000024091	910300100007	Hex nut M10	1	
5	0000025106	910400100007	Flat washer10	1	
6	0000023013	910200200055	Screw M8x16	1	
7	2500502005	532024020001	Footstock	1	
8	0000026009	910401400013	Circlip for hole 47	2	
9	0000027107	910700200019	Bearing 62042Z	2	
10	2500502002	940200400009	Chain wheel	2	
11	0000026003	910401300011	Circlip for shaft 20	2	
12	0000029272	401743010004	Chain 12A-1 (67 joint)	2	
13	2500502007	532024020002	Chain rod	2	
14	0000028076	910600600019	Cotter pin 2x25	2	
15	0000024087	910300100009	Hex nut M14	4	
16	0000023513	910200200074	Screw M10x16	2	
17	2530503001	400243010003	Protection plate	1	
18	0000023488	910200500052	Screw M6x16	6	
19	0000025007	910400100005	Flat washer 6	6	
20	2210618001	400243020021	Rubber cushion	6	
21	0000024092	910301000005	Cap nut M8	2	
22	0000024086	910300100006	Hex nut M8	2	
①	2500500009	401717001000	Front wheel assembly	2	Double wheel
		402617001000			Single wheel
②	2500500007	401716501002	Big wheel assembly	1	

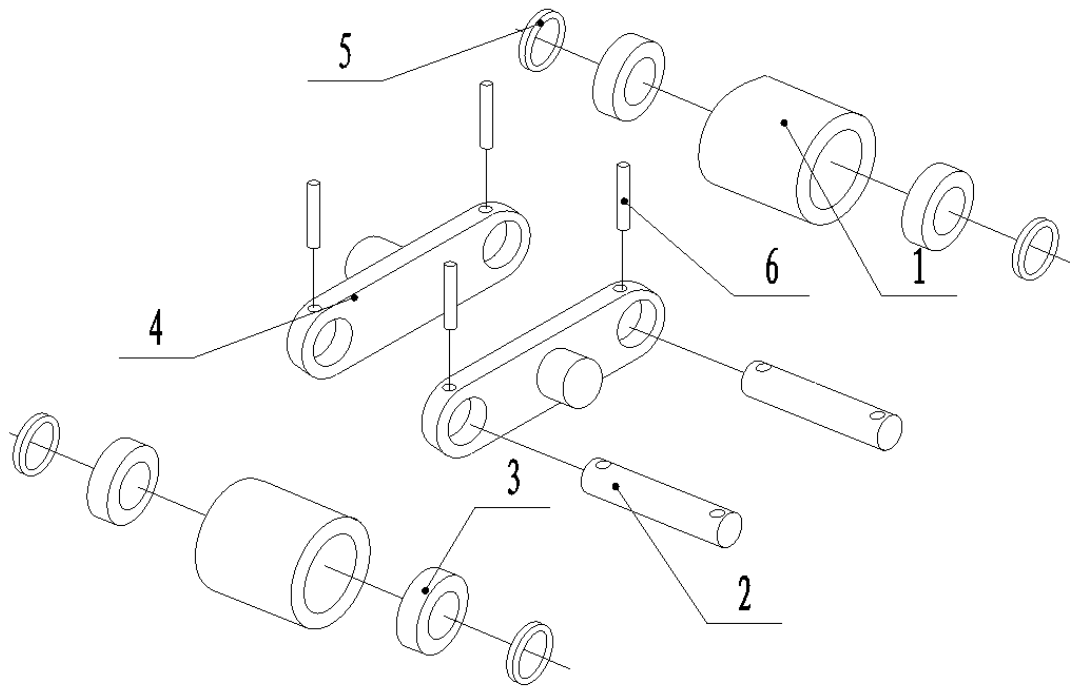
**Fig.5 Big Wheel Assembly**



**Fig.5 Parts List of Big Wheel Assembly**

No.	Old Art No.	New Art No.	Item	Quantity	Remarks
1	1010530001	401716520009	Angled grease cup 6	1	
2	2500507001	400216520000	Big wheel shaft	1	
3	0000027107	910700200019	Bearing 62042Z	2	
4		940300105003	Big wheel $\phi$ 180x50	1	White
		940300105004	Big wheel $\phi$ 180x50		Black
		940300101011	PU Big wheel $\phi$ 180x50		Red
5	0000023484	910200400015	Sunk screw M6x10	4	
6	2500504002	401716520003	Safety damper	1	
7	2500501012	401716510001	Driven wheel frame	1	
8	2500525002	402916520001	Washer	1	
9	0000024085	910300500006	Lock nut M12	1	
10	0000027066	910700600002	Roller bearing 30206	1	
11	0000030026	911200100003	Greasing cup M8x1	1	
12	0000027012	910700200021	Bearing 6206	1	
13	2500502006	401716520004	Gland	1	
14	0000023867	910200400035	Sunk screw M10x20	1	
15	2500502010	321016520008	Washer	1	

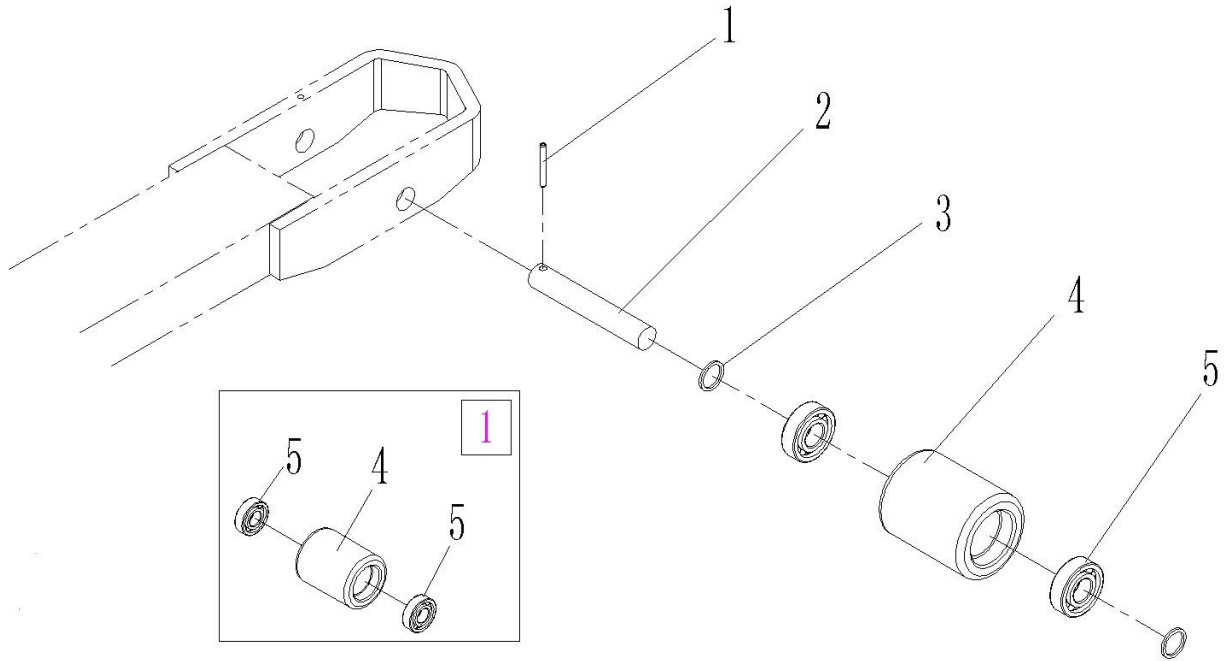
**Fig.6 Front Wheel Assembly(Double wheel)**



**Fig.6 Parts List of Front Wheel Assembly (Double wheel)**

No.	Old Art No.	New Art No.	Item	Quantity	Remarks
1		940300202006	Pinion $\phi$ 74X70	2	
		940300201020	PU Pinion $\phi$ 74X70		Red
2	2000407001	302517020001	Pinion shaft	2	
3	0000027107	910700200019	Bearing 62042Z	4	
4	2000405002	301017020003	Linking board	2	
5	1000525001	940600500014	Spacer	Quantity, specification optional	
6	0000028009	910600400027	Elastic cylindrical pin 5x35	4	

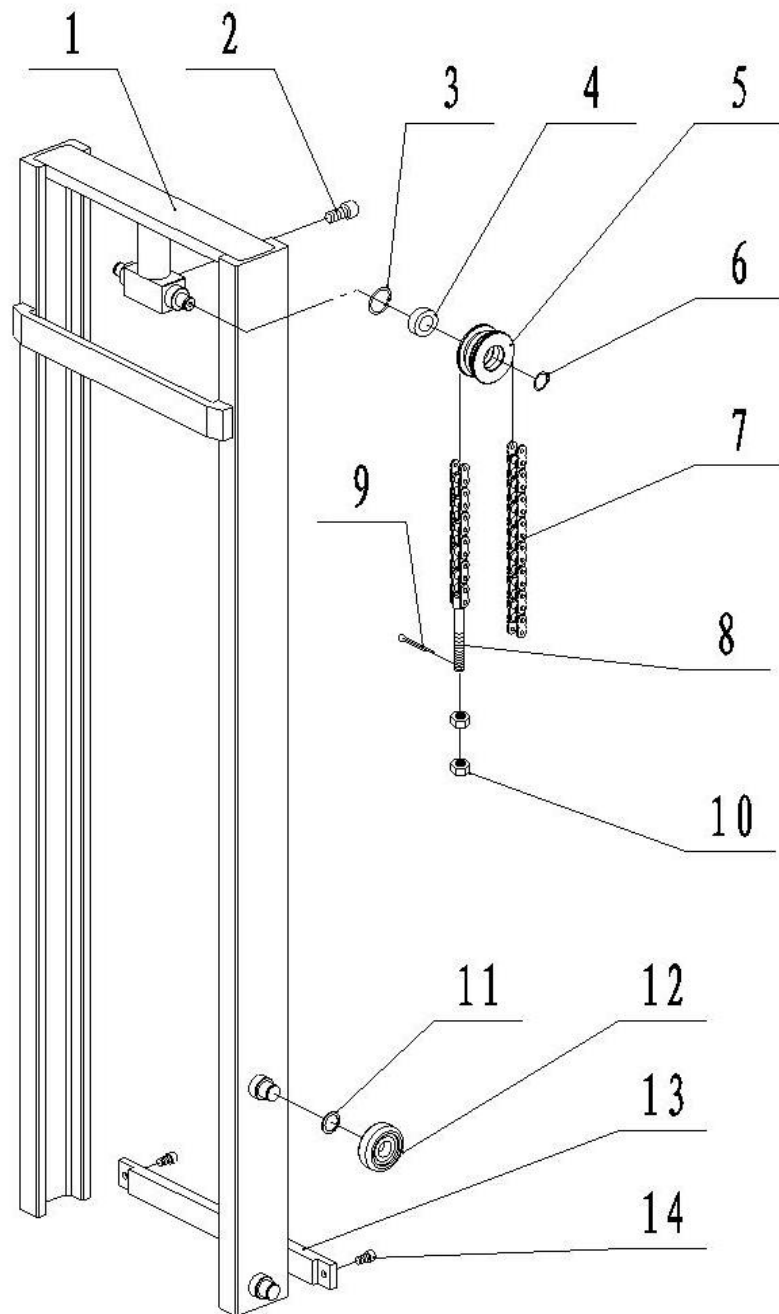
**Fig.7 Front Wheel Assembly(Single Wheel)**



**Fig. 7 Front Wheel Assembly(Single wheel)**

No.	Old Art No.	New Art No.	Description	Qty.	Note
1	0000028055	910600400028	Dowel pin	1	5x40
2	2000407004	301017020001	Wheel axle	1	
3	2530502001	940600500030	Washer	2	
4	9000011707	940300202015	Nylon wheel $\phi 74 \times 93$	1	White
	2530516005	940300202005	Nylon wheel $\phi 74 \times 93$		Black
	1500316005	940300201012	PU wheel $\phi 74 \times 93$		Red
5	0000027107	910700200019	Bearing 62042Z	2	
1		402698510003	Wheel kit	1	White nylon wheel
		401198510001	Wheel kit		Black nylon
		401198510002	Wheel kit		Red PU wheel

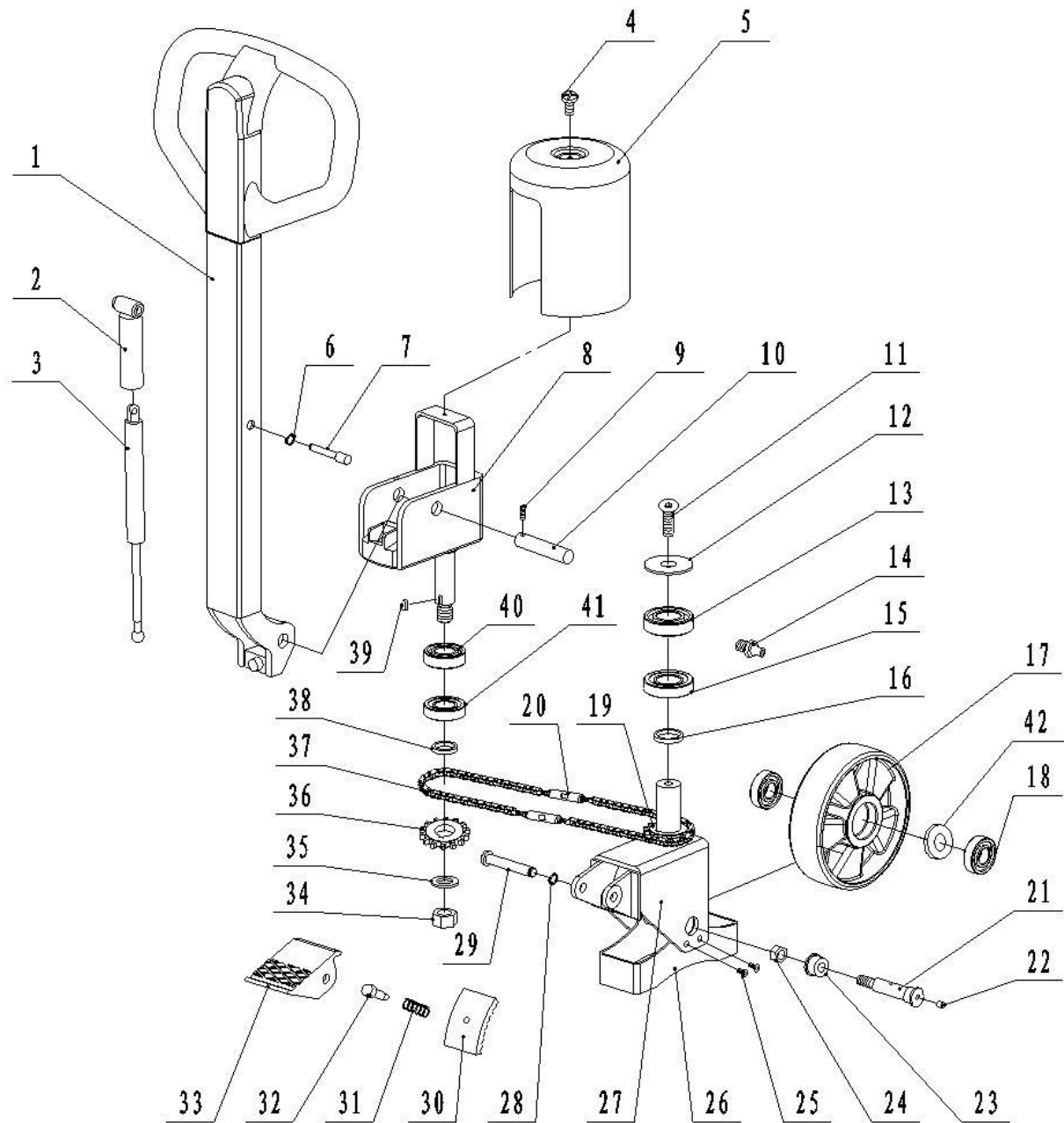
Fig.8 Inner Mast



**Fig.8 Parts List of Inner Mast**

No.	Old Art No.	New Art No.	Item	Quantity	Remarks
1	2530501006	400244010014	Inner mast	1	2500 Portable
	2530501013	400244010017			3000 Portable
	2530501014	400244010021			3350 Portable
	2530501004	400244010001			2500 Stationary
	2530501011	400244010006			3000 Stationary
	2530501012	400244010009			3350 Stationary
2	0000023013	910200200055	Screw M8x16	1	
3	0000026009	910401400013	Circlip for hole 47	2	
4	0000027107	910700200019	Bearing 62042Z	2	
5	2500502002	940200400009	Chain wheel	2	
6	0000026003	910401300011	Circlip for shaft 20	2	
7	0000029267	400244010003	Chain 12A-1 (91 joint)	2	2500 Stationary
	0000029268	532024010013	Chain 12A-1 (95 joint)		2500 Portable
	0000029266	400244010024	Chain 12A-1 (105 joint)		3000 Stationary
	0000029269	401744010006	Chain 12A-1 (109 joint)		3000 Portable
	0000029270	402644010016	Chain 12A-1 (115 joint)		3350 Stationary
	0000029271	400244010022	Chain 12A-1 (119 joint)		3350 Portable
8	2500502007	532024020002	Chain rod	2	
9	0000028076	910600600019	Cotter pin 2x25	2	
10	0000024087	910300100009	Hex nut M14	4	
11	2530402001	400238020010	Adjusting cushion	4	
12	2530402002	400238020020	Roller	4	
13	2530504005	400244020009	Pull rod	1	Stationary
	2530504006	400244020019			Portable
14	0000023483	910200200075	Screw M10X20	2	

Fig.9 Steering Operating System

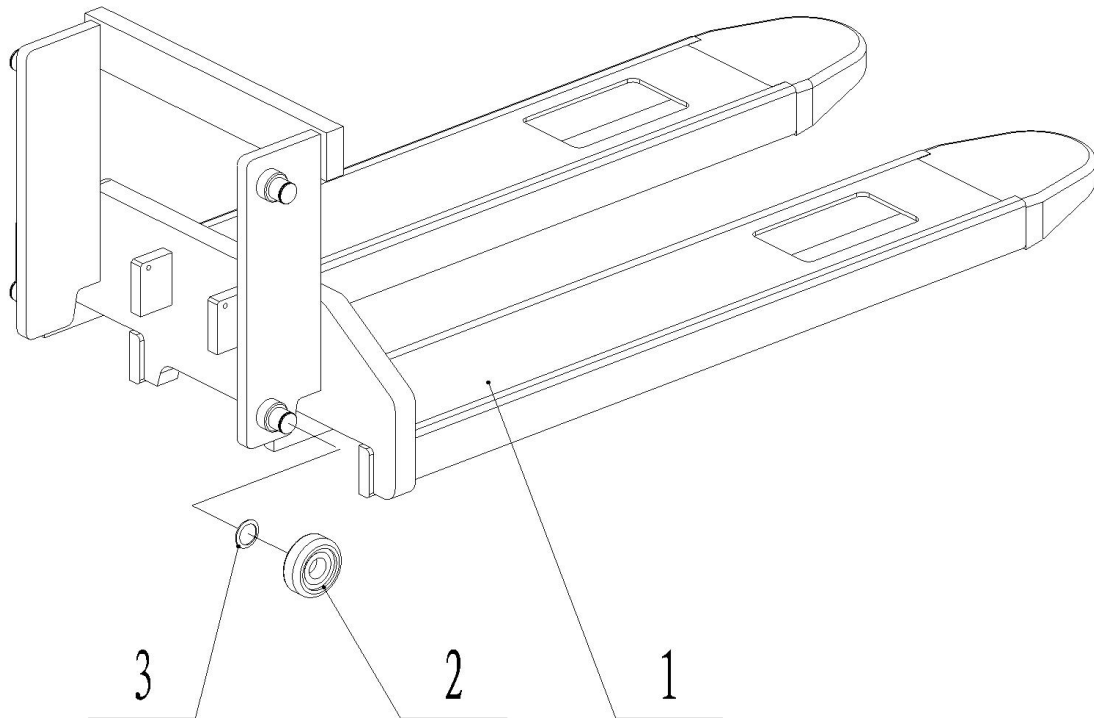


**Fig.9 Parts List of Steering Operating System**

No.	Old Art No.	New Art No.	Item	Quantity	Remarks
1	2530100002	400211001002	Handle	1	
2	2530102001	400211010003	Air spring seat	1	
3	2530121001	940400100036	Air spring(handle)	1	
4	0000023280	910200500037	Screw M5X10	1	
5	2530103001	400211020016	Handgrip rotating seat cover	1	
6	0000026051	910401300001	Circlip 8	1	
7	2530107002	400211020011	Air spring shaft	1	
8	2530101001	400211010000	Handle connection seat	1	
9	0000023511	910200800003	Set screw M5x12	1	
10	2530107001	400211020004	Handle lever	1	
11	0000023867	910200400035	Sunk screw M10x20	1	
12	2500502006	401716520004	Gland	1	
13	0000027012	910700200021	Bearing 6206	1	
14	0000030026	911200100003	Greasing cup M8x1	1	
15	0000027066	910700600002	Roller bearing 30206	1	
16	2500125002	402911020005	Washer	1	
17	2500516001	940300105003	Big wheel $\phi$ 180x50	1	
	2800116001	940300101011	PU Big wheel		
	2530516003	940300105004	PU Big wheel(Yellow)		
	2530516002	910700200019	PU Big wheel(Black)		
18	0000027107	402916520006	Bearing 62042Z	2	
19	2500109002	402911010000	Steering chain wheel	1	
20	2500100003	400216520000	Tension screw	2	
21	2500507001	401716520009	Big wheel shaft	1	
22	1010530001	402916520001	Angled grease cup 6	1	
23	2500525002	910300500006	Washer	1	
24	0000024085	910200400015	Lock nut M12	1	
25	0000023484	401716520003	Sunk screw M6x10	4	
26	2500504002	401716510000	Safety damper	1	
27	2500501011	910401300003	Braking wheel frame	1	
28	0000026034	402916520002	Circlip for shaft 12	1	
29	2500507002	402916520003	Hinge pin	1	
30	2500505001	321016520005	Brake block	1	
31	2500531001	402916520004	Spring	1	
32	2500523002	402916520005	Push rod screw	1	

33	2500505002	910300600003	Cam footpedal	1	
34	0000024095	910400100011	Lock nut M18x1.5	1	
35	0000025104	402911020001	Flat washer 18	1	
36	2500109001	401711010002	Steering chain wheel	1	
37	0000029274	402911020000	Roller drive chain (08B)	2	
38	2500125001	910600800009	Washer	1	
39	0000036010	910700200020	Flat pin C6X6	2	
40	0000027011	910700600001	Bearing 6205	1	
41	0000027069	321016520008	Roller bearing 30205	1	
42	2500502010		Washer	1	

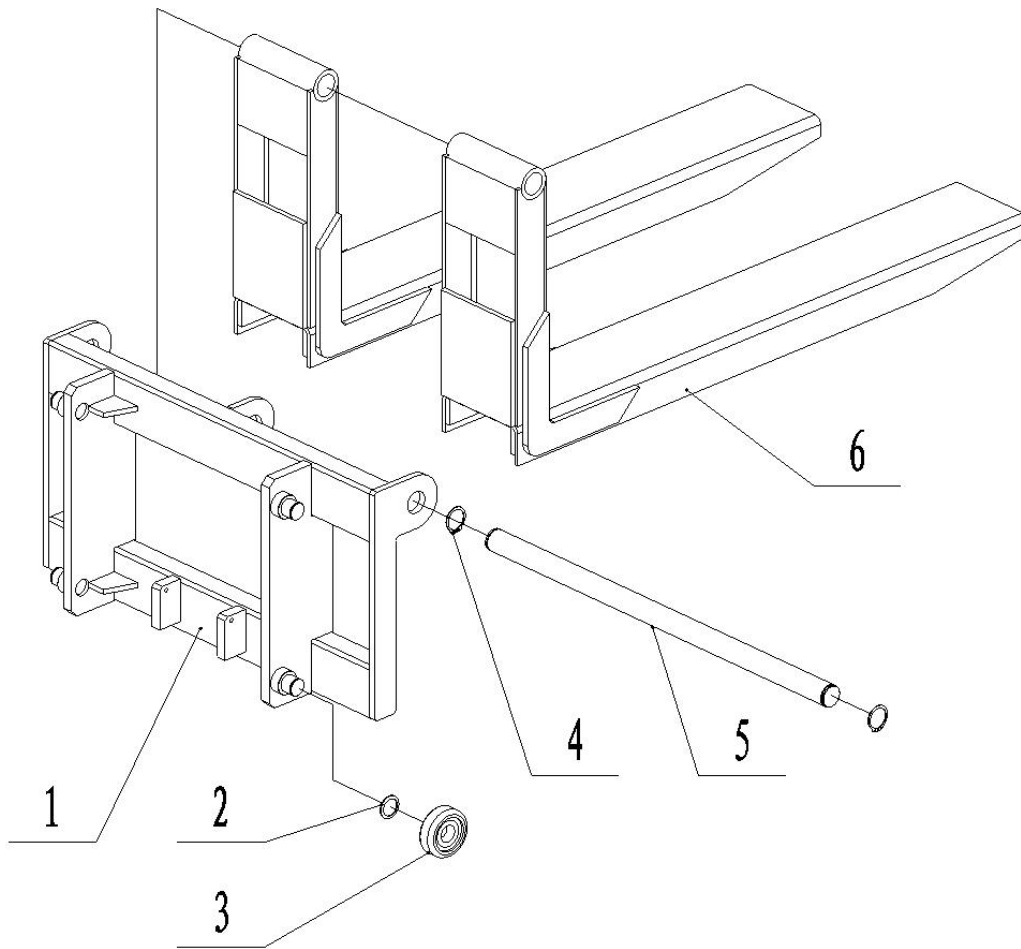
**Fig.10 Stationary Pallet Frame**



**Fig.10 Parts List of Stationary Pallet Frame**

No.	Old Art No.	New Art No.	Item	Quantity	Remarks
1	2530401014	400238010002	Pallet frame	1	1100 for double mast
	2530401002	400238010003			1150
	2530401004	400238010000	Pallet frame	1	1100 for single mast
	2530401015	400238010001			1150
2	2530402002	400238020020	Roller	4	
3	2530402001	400238020010	Adjusting cushion	4	

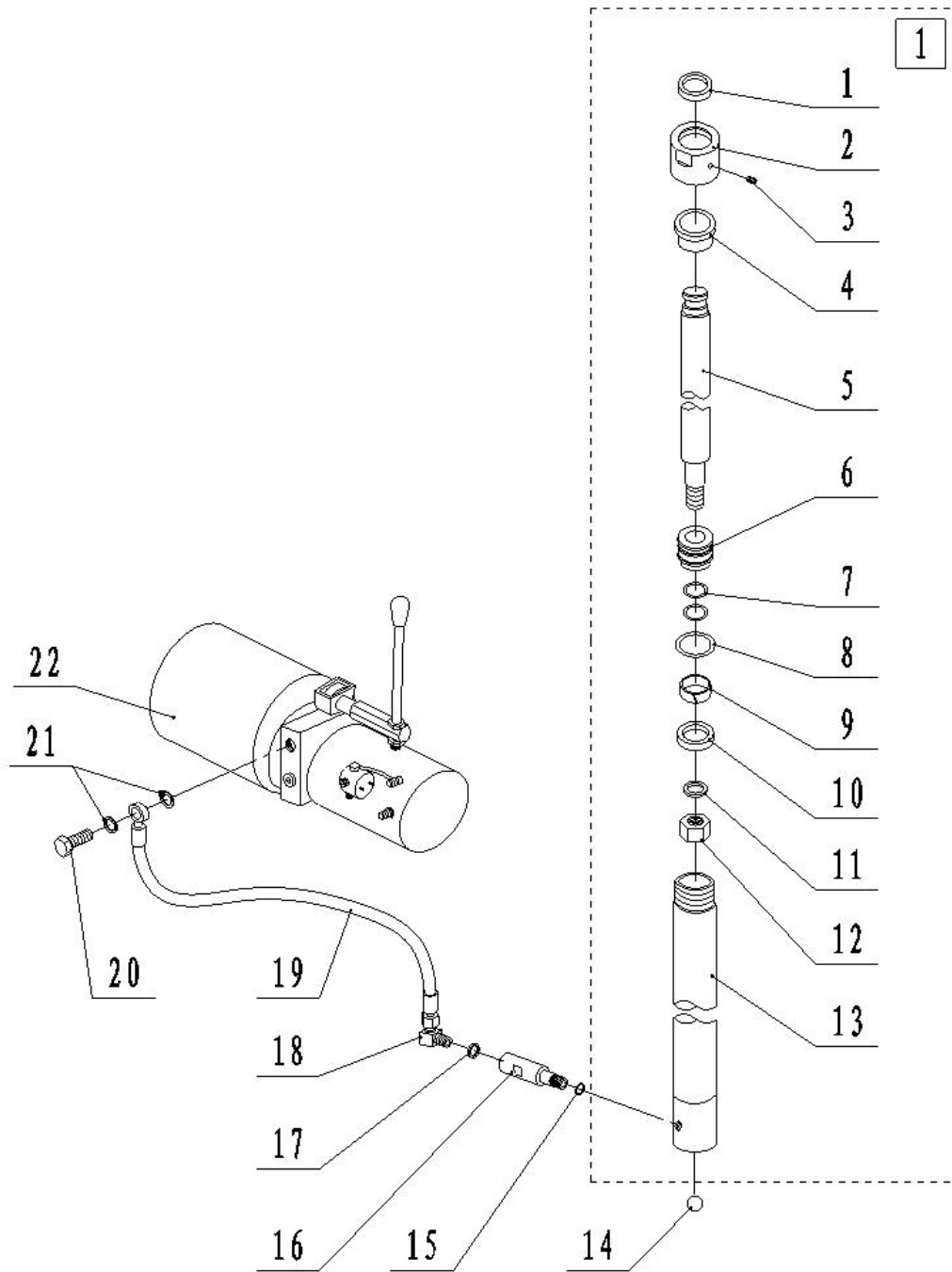
**Fig.11 Portable Pallet Frame**



**Fig.11 Parts List of Portable Pallet Frame**

No.	Old Art No.	New Art No.	Item	Quantity	Remarks
1	2530401003	400238010005	Pallet frame	1	For double mast
	2530401006	400238010004	Pallet frame		For single mast
2	2530402001	400238020010	Adjusting cushion	4	
3	2530402002	400238020020	Roller	4	
4	0000026042	910401300017	Circlip for shaft 32	2	
5	2500407001	401738020013	Long shaft	1	
6	2500401001	401738010011	Fork	2	900 for double mast
	2500401013	401738010012			1100
	2500401014	401738010013			1150
	2510101002	401738010008	Fork	2	900 for single mast
	2500401015	401738010009			1100
	2500401016	401738010010			1150

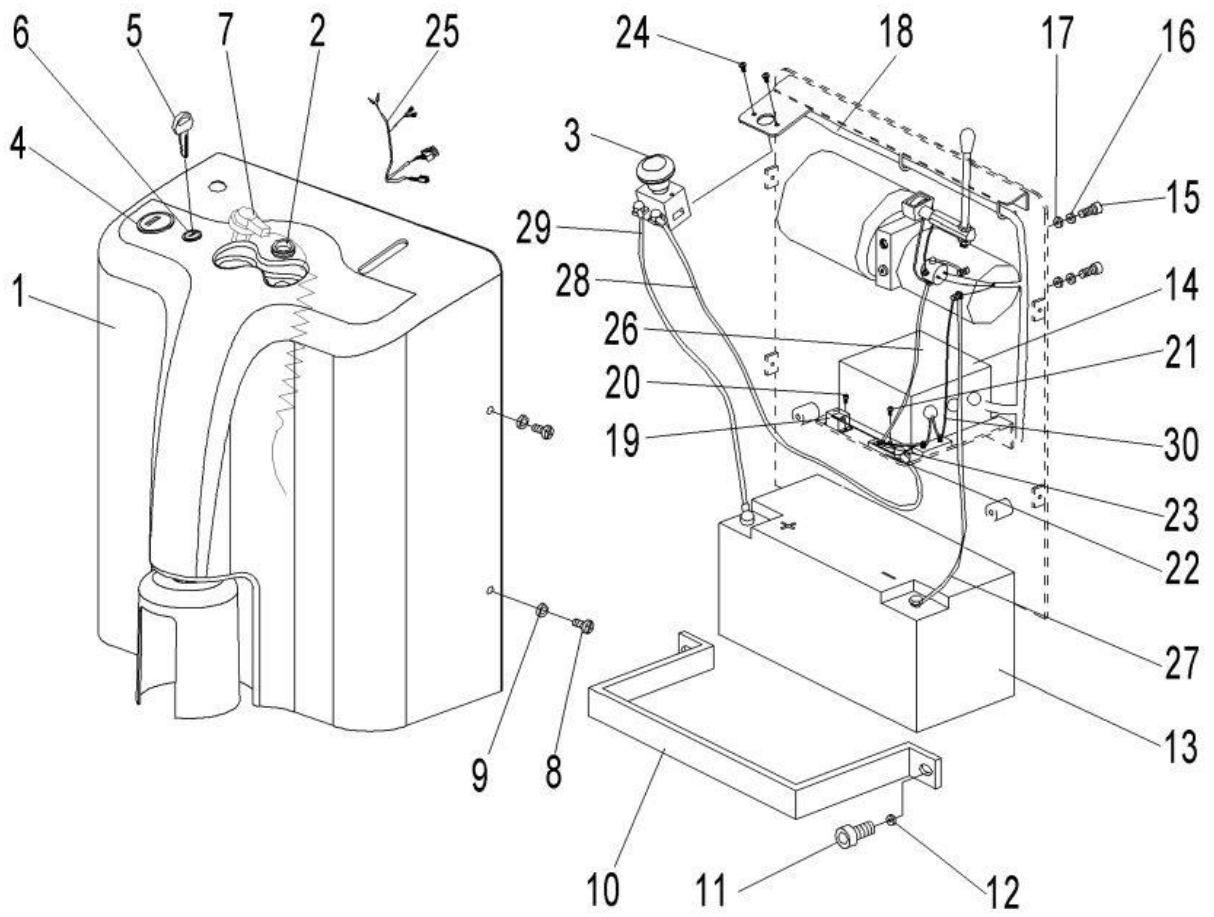
Fig.12 Hydraulic System



**Fig.12 Parts List of Hydraulic System**

No.	Old Art No.	New Art No.	Item	Quantity	Remarks
1	0000022114	910800400002	Dust ring 40X48-5/6.5	1	
2	2520202001	400298520004	Shielding cover	1	
3	0000023502	910200800008	Set screw M6X6	1	
4	1050302003	400298520005	Bushing	1	
5	2520207001	400298520006	Piston rod	1	1600
	2520207002	400298520007			2500
	2520207003	400298520008			3000
	2520207006	400298520009			3350
6	2520202002	400298520010	Piston $\Phi$ 50	1	
7	0000022115	910800100069	O-ring 32x2.4	2	
8	0000022029	910800100050	O-ring 50x3.1	1	
9	2520202003	400298520013	Support ring for hole 50X15X2.5	1	
10	0000022116	910800300002	Y-type sealing ring for shaft 50X40X6	1	
11	0000025094	910400500013	Spring washer 24	1	
12	0000024072	910300200010	Hex nut M24X1.5	1	
13	2520208001	400298520016	Cylinder	1	1600
	2520208002	400298520017			2500
	2520208003	400298520018			3000
	2520208006	400298520019			3350
14	0000037028	910701100019	Steel ball 18	1	
15	0000022118	910800100039	O-ring 18x2.4	1	
16	2520200004	402924010000	Speed control valve	1	
17	0000022051	910800900005	Washer assembly 16	1	
18	2520202007	402924020000	Bend (1)	1	
19	2530217001	400224020000	High pressure oil pipe	1	
20	2530217002	400224020001	Oil pipe bolt	1	
21	0000022051	910800900005	Washer assembly 16	2	
22	2530200002	950900100017	Pump station 12V-1.6kw-2.1CC	1	
①	2520200012	401744010003	Cylinder assembly	1	2500
	2520200005	401744010007			3000
	2520200006	402943010000			1600
	2520200008	400244010012			3350

**Fig.13 Distribution Box Components**

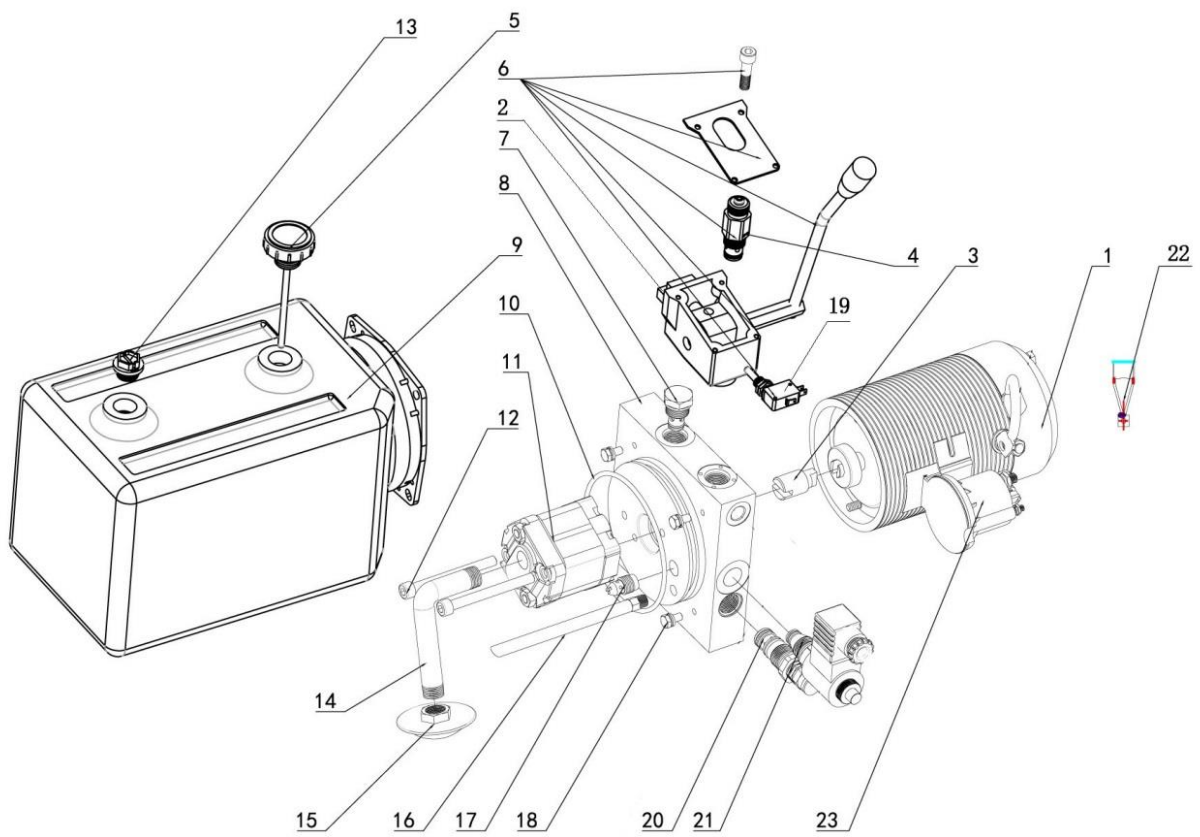


**Fig.13 Distribution Box Components**

No.	Old Art No.	New Art No.	Item	Quantity	Remarks
1	2530303002	400221520000	Electrical box	1	
2	2210418003	505621520036	Sheath	1	
3	2240434001	920200100004	DC power switch ZDK31-250	1	
4	2530334003	921100100027	Coulombmeter 12V BI1201A(B)	1	
5	1010434015		Key	1	
6	2530334002	402634001000	Key switch LKS-101A	1	
7	1010434009	921500200003	Double-end spring plug 3x0.75 (Australian)	1	
	1010434011	921500200004	Double-end spring plug 3x0.75 (English)		
	1010434012	921500200005	Double-end spring plug 3x0.75 (European)		
	1010434013	921500200006	Double-end spring plug 3x0.75 (Italian)		
	1010434014	921500200007	Double-end spring plug 3x0.75 (Swedish)		
	2530334005	921500200002	Double-end spring plug 3x0.75 (American)		
	1010434023	921500200008	Double-end spring plug 3x0.75 (Asian)		
8	0000023512	910200500050	Screw M6x10	4	
9	0000025007	910400100005	Flat washer 6	4	
10	2530304001	400237020000	Battery presure plate	1	
11	0000023013	910200200055	Screw M8x16	2	
12	0000025004	910400500006	Spring washer 8	2	
13	2530332001	920600100004	Battery 12V150AH	1	
14	2530320001	921000100011	Charger 12V/20A QQE240-5CH20-26-A	1	230V
	2530320002	921000100010			115V
15	0000023483	910200200075	Screw M10x20	2	
16	0000025065	910400500007	Spring washer 10	2	
17	0000025106	910400100007	Flat washer 10	2	
18	2530333001	400233010000	SPM harness	1	
19	2530334004	921200100005	Protection module BD-V-12	1	
20	0000023052	910200500034	Screw M4x8	2	
21	0000023512	910200500050	Screw M6x10	4	
22	1000434007	920100400002	Fuse seat SYY	1	
23	1020434001	920100100008	Bolted fuse 200A	1	
24	0000023126	910200300012	Screw M5x12	2	
25		400233010001	Electrical wiring harness	1	

26		400233010002	Cable-KM+-25-8-8-260	1	
27		400233010003	Cable-B--25-8-8-300	1	
28		400233010004	Cable -FU+-25-8-8-950	1	
29		400233010005	Cable-B+-25-8-8-550	1	
30		400233010006	Output cable of charger	1	

**Fig.14 Pump Station Components**



**Fig.14 Pump Station Components**

No.	Old Art No.	New Art No.	Description	Standard	Qty.
1	2500237004	402698520001	Motor	MD12160	1
2	2500214001	402698520005	Micro switch		1
3		402698520021	Coupler	DCP-035	1
4		402698520004	Valve core	MV-03-100	1
5	2500237005	532098510005	Cylinder cover	FC-04	1
6	9000002213	400298510000	Hand valve	MV-03	1
7	2500235003	532098510003	Check valve	CV-01	1
8		400298520000	Center valve	B202	1
9	9000012073	402698520008	Cylinder	58133500207	1
10	2500222001	910800100088	O ring	112x3.55	1
11	2500237001	532098510000	Gear pump	CBK-F120	1
12		402698520011	Bolt	M8x80-N	2
13		402698520023	Plastic plug	PP-04	1
14	2500217001	532098520003	Oil suction pipe	FP-03H-4676	1
15		402698520010	Filter	FS-03B	1
16		402698520013	Oil return hose	RU12-150	1
17	2500215001	402698520015	Flow control	RPCV-02-08	1
18		400298520001	Bolt	M6x14	4
19	2500214002	402698520003	Micro switch		1
20	2500235002	402698520018	Overflow valve	RV-03	1
21	2530337012	402698520019	Electromagnetic	SCV(E)-Y012DC	1
22	2530337014	402698520022	Carbon brush	MD12.160-132	4
23	2500214003	402698520000	Start button	DK0312A	1